

EMCO Thermowell Type TFA with Flange Connection

Principle

EMCO thermowell type TFA is used for mechanical and corrosive protection of temperature sensing instruments such as bimetal thermometers, thermocouples, and RTD's with a maximum outer diameter of 6.4 and 9.5 mm (1/4" and 3/8").

Construction

EMCO thermowells type TFA are designed and manufactured according to I.S.A. recommendations.

Material : AISI 316, Carbon steel, Monel, 254SMO, Titanium, Hastelloy, and other exotic materials on request

Connection : Flange

Size : 1", 1 1/2", 2"

Pressure rating : 150 lbs - 2500 lbs

Flange facing : RF or RTJ

Flange standard : B 16.5

Insertion length(U) : 60 mm (2"), 102 mm (4"), 178 mm (7"), 254 mm (10"), 330 mm (13"), 406 mm (16"), 559 mm (22")

Bore length (S) : 101.6 mm (4"), 152.4 mm (6"), 228.6 mm (9"), 304.8 mm (12"), 381 mm (15"), 457.2 mm (18"), 609.6 mm (24")

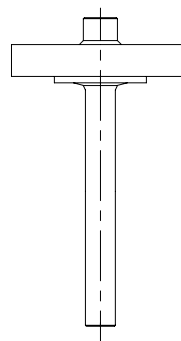
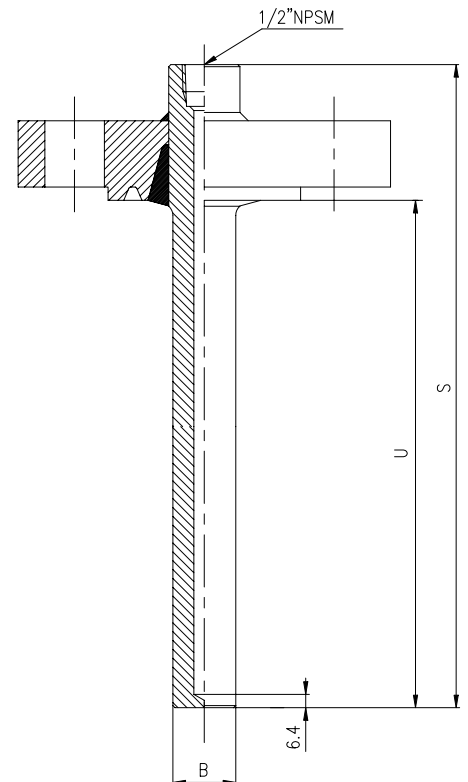
Bore : 7, 10 mm (0.276", 0.394")

Well form : Straight, stepped straight, taper

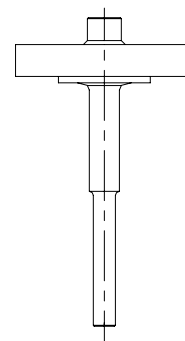
Tip thickness : 6.4 mm (0.25")

Instrument conn. : 1/2" NPSM

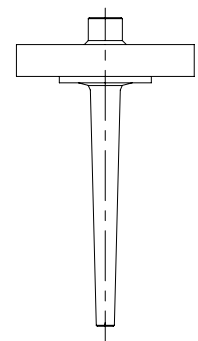
Accessories : Plug and chain



TFA-S



TFA-SP



TFA-T